

Jeff Bezos, CEO and Founder Amazon

“Artificial Intelligence and Machine Learning ...
will empower and improve **every business, every
government organization, every philanthropy** ...

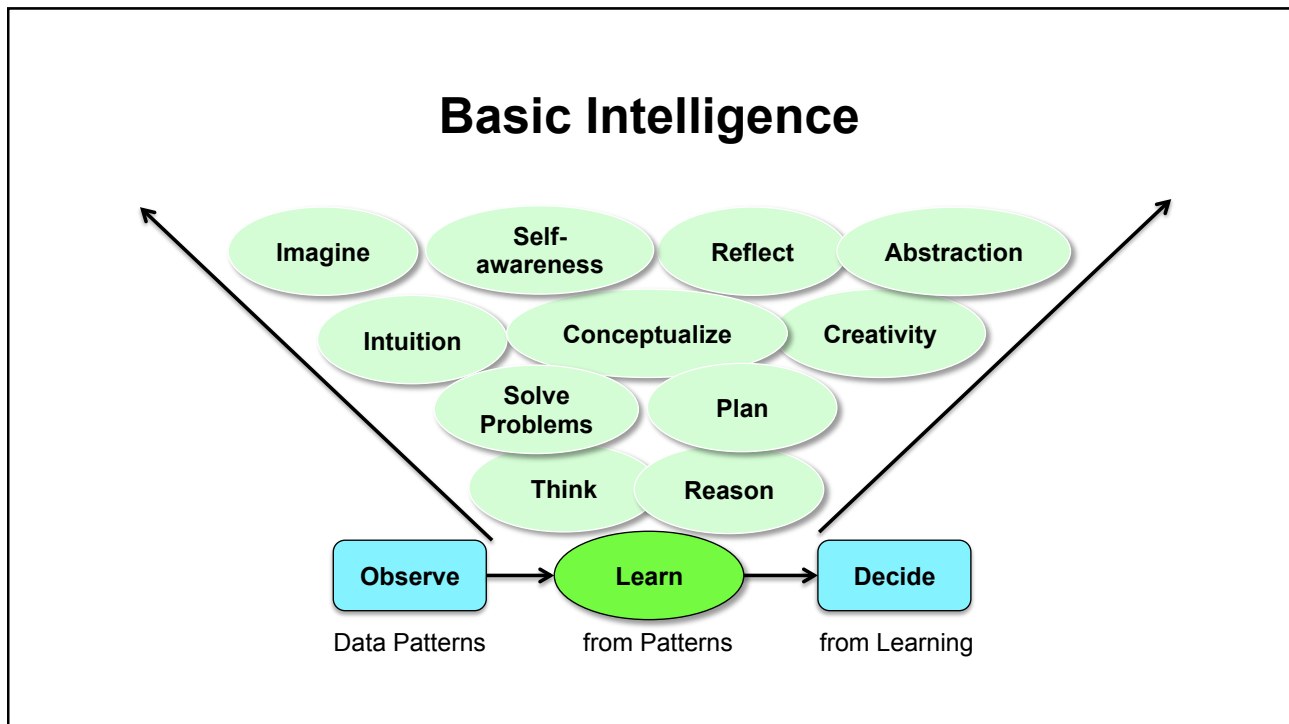
... there is not an institution in the world that cannot be
improved with Machine Learning.”

Stephen Hawking, Astrophysicist and Futurologist

“Success in creating AI could be the **biggest event in the history** of our civilization.

The genie is out of the bottle. We need to move forward on artificial intelligence development but we also need to be mindful of its **very real dangers**. I fear that AI may replace humans altogether.”

Artificial Intelligence
is the ability of machines
to mimic human intelligence



Is There a **Dog** in the Picture?



Source: Andreessen Horowitz

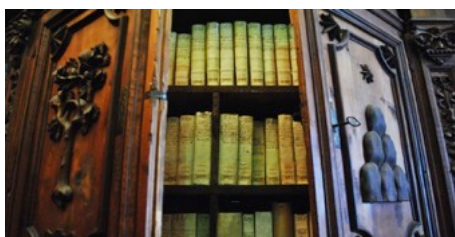
Original Picasso?



Source: Quartz/Artenx/Rugers University/The Hague

After analyzing 80,000 brushstrokes from 297 digitized sketches and drawings, an AI system was able to spot forged drawings in the style of Pablo Picasso, Henri Matisse, and Egon Schiele with 100% accuracy.

Artificial Intelligence Helping the Vatican



53 miles (85 km) of old books in Vatican covering 12 centuries

Inaccessible to scholars worldwide

Handwritten script cannot be machine read

AI used to predict the text as **data pattern**

cum autē. p̄ntif. pulchib. quap. ac saluif. omib. a mari usq. ad muros dicte ciuitatis. 7 cū omib. possessionib. posita in monte s̄c̄i stephani. plantijs 7 autē. Senogallie de iure ep̄m̄is Senogahen. 7 Curte que vocat̄. Tresuilice. cū castello qd̄ vocatur Orgiolo cū omib. hominib. 7 eoz. bonis. et suis penentijs. 7 Castri vacca rijs. Castri Ramusetti. et Castellare filioz. Leonis. et Castellare Scorzalporis.

What is this →
anno, aimo, aiii, aiino, amio ?

Amo

Source: theatlantic.com

Artificial Intelligence Can Read Your Lips



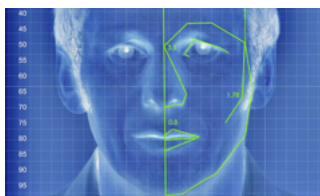
University of Oxford's Department of Computer Science – LipNet, GRID database

- AI accuracy = **93.4%**, Human expert accuracy = **52.3%**

Oxford's Engineering Science and Google DeepMind – 100,000 video clips from BBC TV

- AI accuracy = **46.8 %**, Human expert accuracy = **12.4%**
- Accuracy is lower, due to lighting, orientation, and greater language complexity

Our **Face** Says a Lot



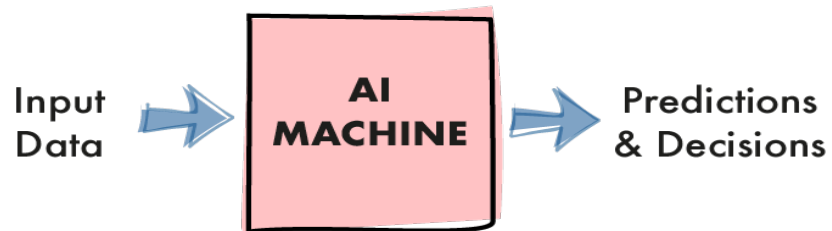
Source: Guardian

- Identity
- Emotions
- Mood
- Health
- Orientation
- ...



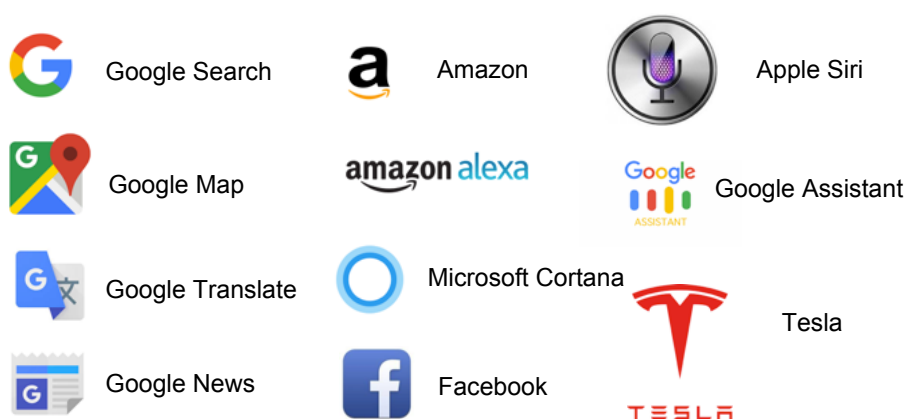
Source: The Economist

AI Automates Decision Making



Expert Decision-Making Becomes Cheaper

You are Already Using Artificial Intelligence



More AI Applications ...

Autonomous Vehicles

- Cars, buses, trucks
- Drones, Planes ...
- Robots

Understanding the World

- Computer vision – 95%
- Object recognition
- Face recognition
- Automatic checkout
- Narratives from pictures
- Precision farming

Content Generation

- Articles, tweets, music, art
- Step by step recipes from video
- Photorealistic images – from sketches
- Movie trailers
- Application software from modules

Predictions

- Success of events
- Maintenance
- People personality
- Medical condition
- Diagnosis
- Recommendations
- Suicide intent
- Fraud

Optimizing

- Driving routes
- Football placement
- Software – 60%
- Energy consumption
- Stock market returns
- Income tax filings
- Spam

Language Understanding

- Speech recognition
- Lip reading
- Voice print
- Translations
- Autoreply to emails
- Understanding content
- Abstract generation
- Synopsis generation
- Job description match
- Legal document sorting

Behavior Understanding

- Customer intent
- Job interviews
- Political leanings

... growing every day



How Does a Machine **Learn**?

Learning Techniques



Assisted Learning
Supervised Learning



Self Learning
Unsupervised Learning

Alpha Zero “Destroys” Stockfish

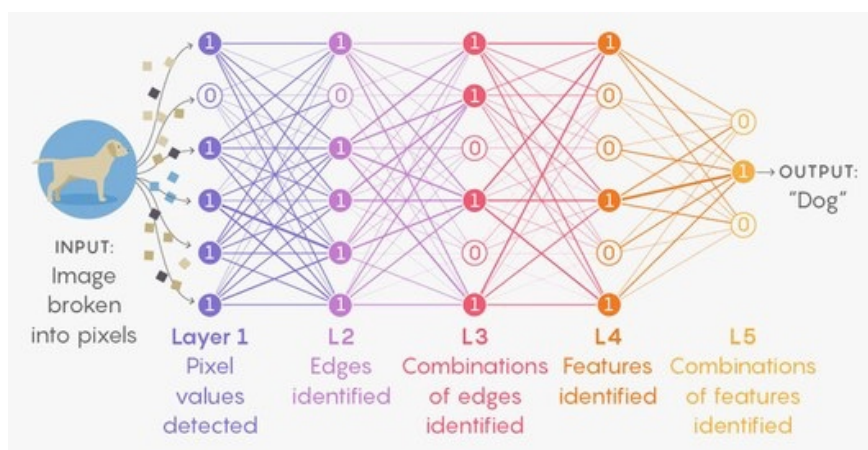


Deep Mind’s Alpha Zero **learnt Chess in 4 hours**
“**Stockfish**” is the highest rated Chess Computer

Our Brain – A Network of Neurons



Deep Learning Neural Network

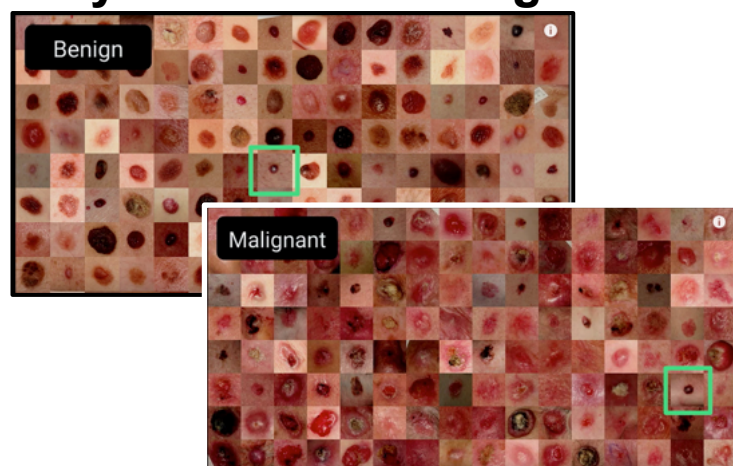


LUCY READING-IKKANDA/QUANTA MAGAZINE, <https://www.wired.com/story/new-theory-deep-learning>

Translating AI into Business

Business is all about
Predictive **Decision-Making**

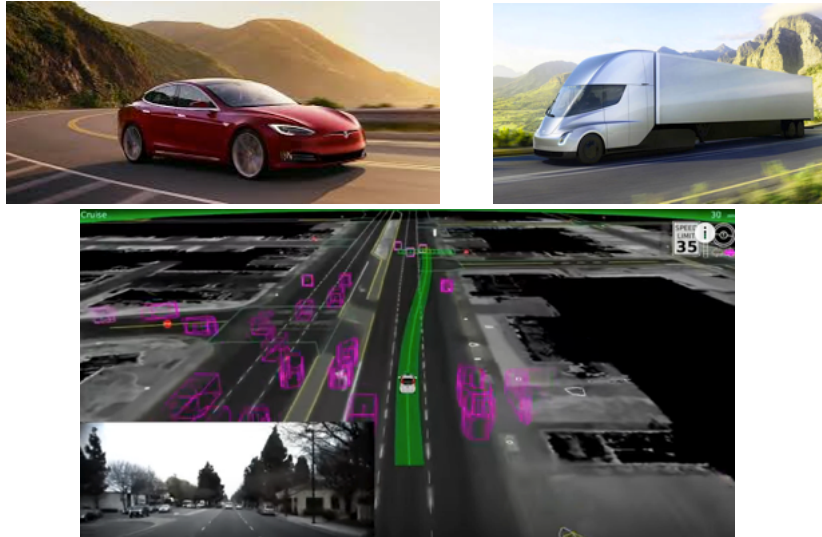
Stanford University Skin **Cancer** Diagnosis



Source: Skin Cancer Image Classification (TensorFlow Dev Summit 2017)

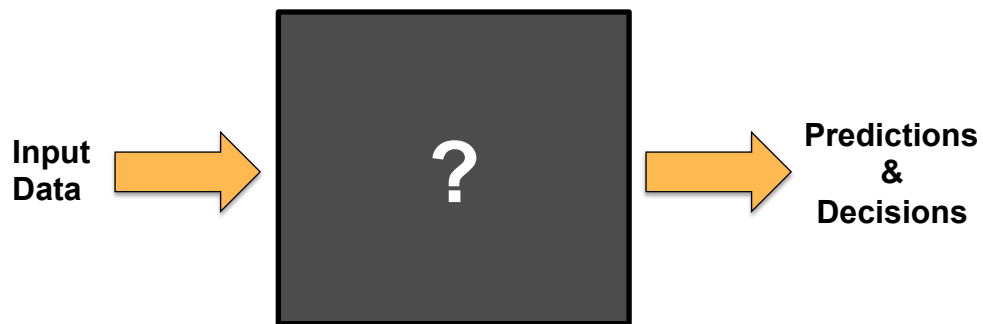
AI outperformed expert dermatologists in diagnosis accuracy

Tesla – **Autonomous** Vehicles



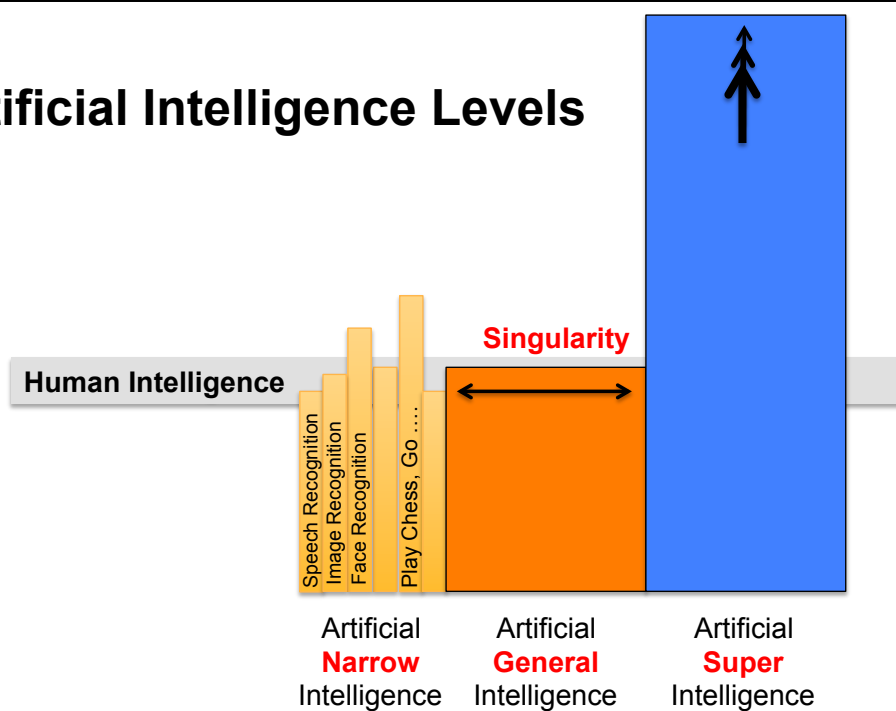
Data is the fuel of **AI**

AI System = **Expert** in a Black Box



Transparency ? Rationale ?

Artificial Intelligence Levels



Thanks

Sharad Gandhi

gandhi.sharad@gmail.com



<https://www.amazon.com/AI-Translating-Artificial-Intelligence-Business/dp/1521717206/>

<http://www.ai-u.org/>